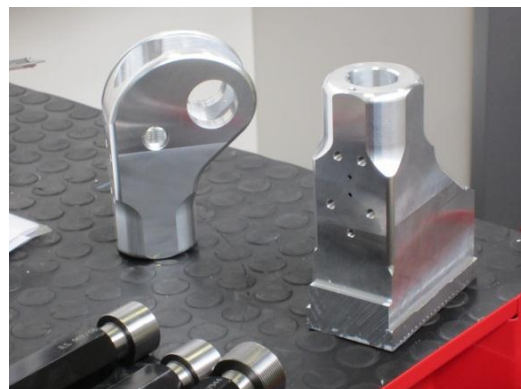
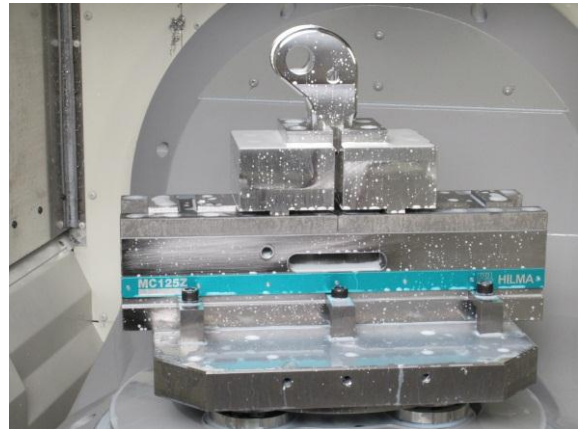


HI-FORCE'S DECISION TO INVEST IN THE BEST PAYS OFF

A commitment to investing in the best machines and the best tooling has proved a highly successful strategy for hydraulic tool manufacturer, Hi-Force Limited. This commitment to using the best tooling is also why the company uses Hilma vices from Roemheld in its new Mori Seiki machining centre.

The Hi-Force UK headquarters, based in Daventry, has already expanded manufacturing capacity from 15,000 sq. ft. to 47,000, with further expansion planned for this year, which will take the total size of its base up to 67,000 sq. ft. This is in line with the company's

decision to bring the majority of its subcontract work back in-house in order to control quality and guarantee the highest possible levels of accuracy and availability. To achieve this, Hi-Force has invested in excess of £1.7m on machines since last July and has over £90,000 of tooling on-site.



This emphasis on accuracy and reliability was the reason that Hi-Force purchased two Roemheld Hilma MC125Z hydraulic vices for use on its new Mori Seiki NMV 5-axis machining centre. This machining centre has a five pallet workload system and primarily makes components for hydraulic wrenches.

Paul Dutton, Workshop Manager for Hi-Force, said: "We were very impressed with the performance of a Hilma MC125Z vice which was previously fitted on another Mori Seiki machine. This vice has been working across two shifts for two and a half years and it has maintained full accuracy despite both jaws moving. So Roemheld was an obvious choice when we were looking to fit further vices on our new machine. We are so pleased with their quality and reliability we plan to fit at least two more Roemheld vices as we expand our machine shop capabilities."



To find out more about Roemheld's range of workholding solutions, visit www.roemheld.co.uk or telephone 0121 453 1414.