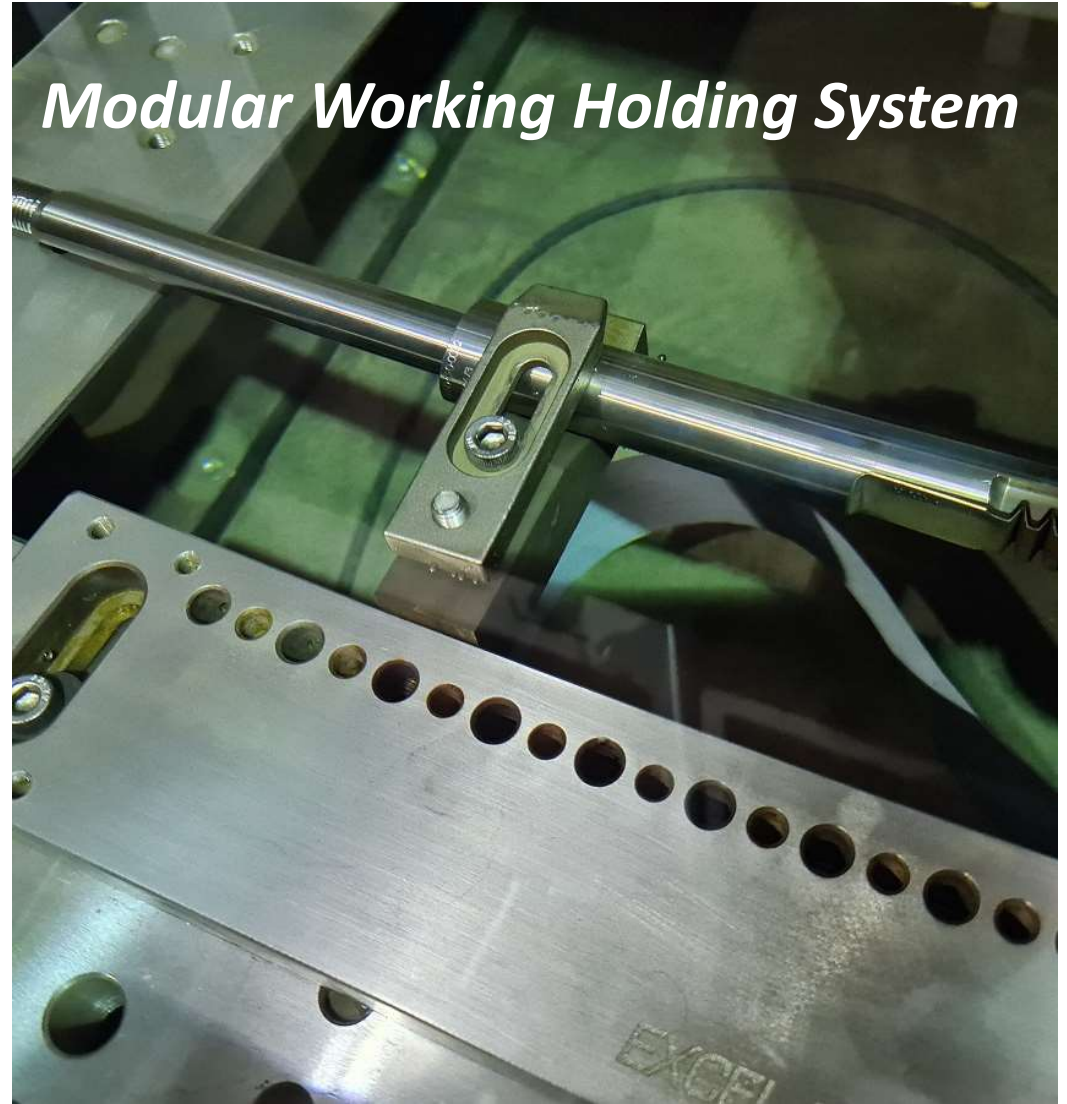
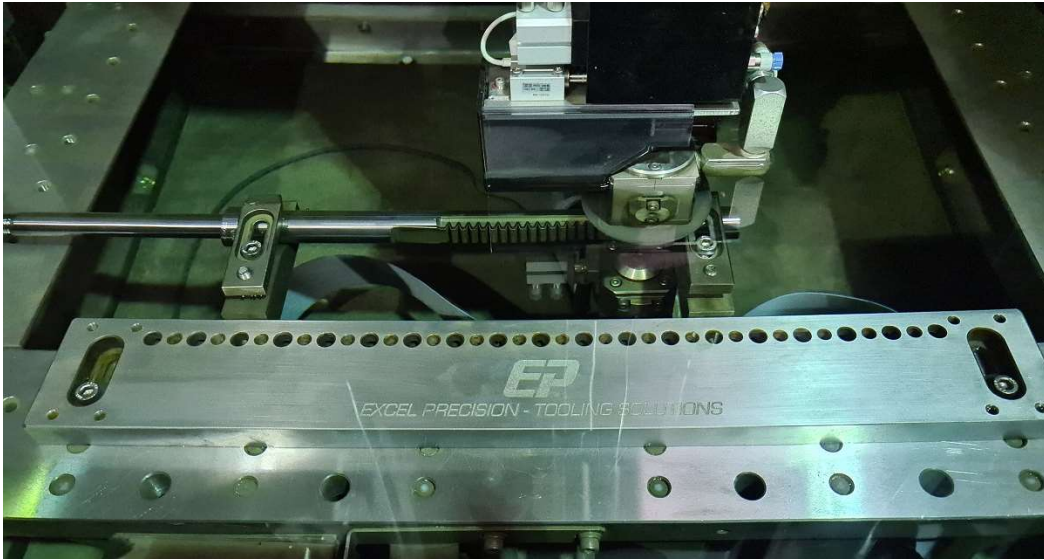




***MODULAR WORK HOLDING SYSTEM***





## ***Background***

Excel Precision Tooling Solutions recently re-launched its Standard Modular Work Holding System. A tried and trusted system which was originally introduced to the market 25 years ago. In addition to our standard system, we can manufacture bespoke jaws, clamps, vee blocks and profiled jaws to suit your application.





## ***Materials and Applications***

Our Work Holding System is made in the U.K. from Stavax Steel, heat treated to 52Rc and ground.

These kits are not only for EDM machines but will also work on other types of machines i.e. CNC machining centres, manual mills and CMM machines.

We can design our System to fit your application.

# Contents of a Standard System

1. EPTS-001 – Side Rail – Quantity 2 off

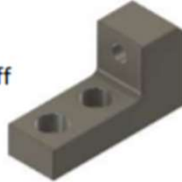
*Made to suit any Machine Type*



2. EPTS-003A – Fixed Jaw – Quantity 2 off



3. EPTS-003B – Moving Jaw Body – Quantity 2 off



4. EPTS-003C – Moving Jaw – Quantity 2 off



5. EPTS-004 – Z Support Plate – Quantity 4 off



6. EPTS-005 – Clamp – Quantity 4 off



7. EPTS-007 – Reference Button – Quantity 4 off



8. EPTS-008 – Z Riser Plate – Quantity 4 off



9. EPTS-010 – Rail Fixing Washer – Quantity 4 off



10. Foam Insert – Quantity 1 off



11. 5025 Heavy Duty Case – Quantity 1 off



12. A selection of Stainless-Steel M8 Fixing Screws

4 off - 60mm Long, 4 off - 50mm Long, 4 off - 40mm Long  
8 off - 30mm Long, 8 off - 20mm Long, 4 off - 15mm Long



13. Stainless Steel Rail levelling pins (Nylon Tipped) 16 off

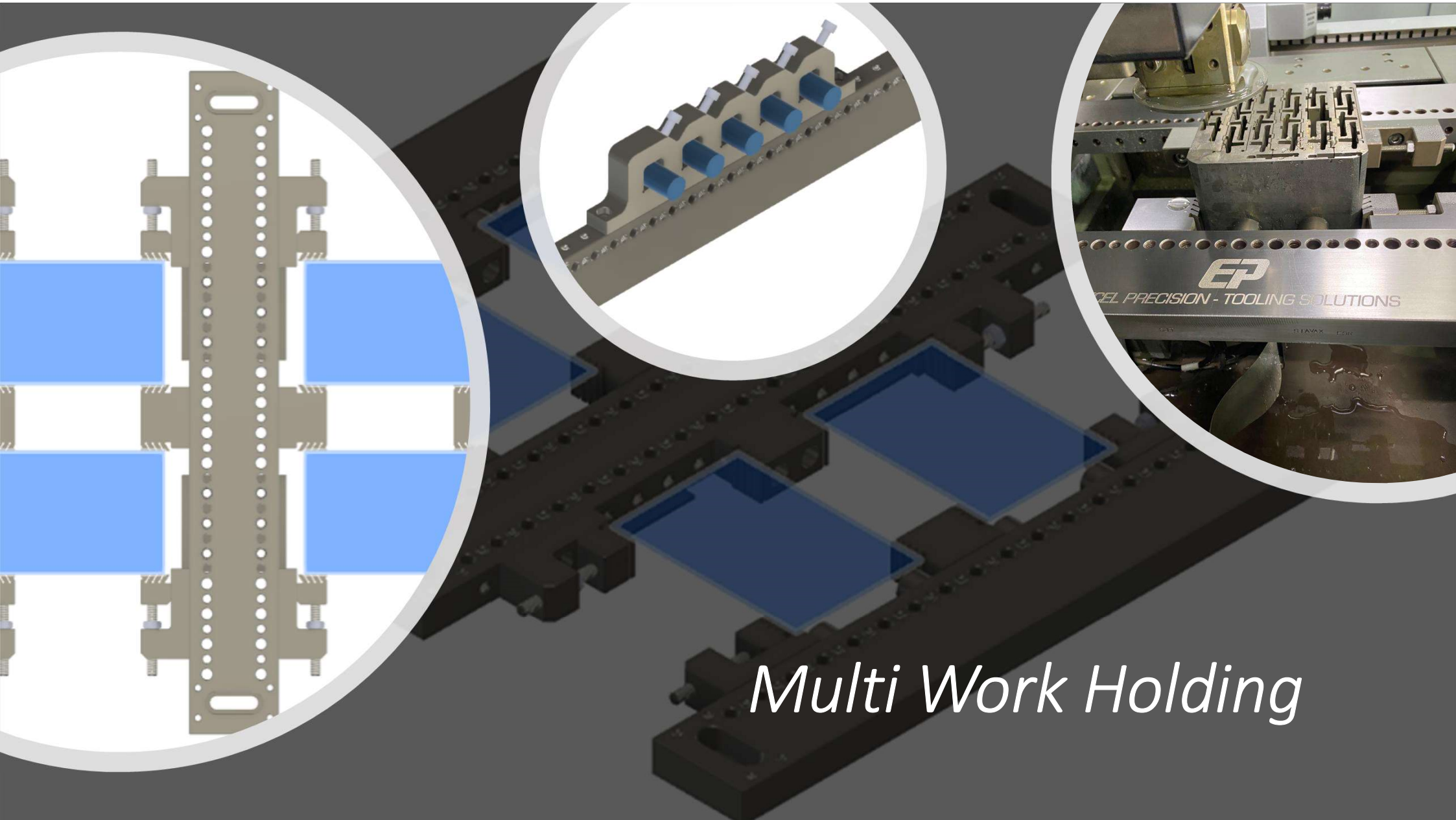




## ***Bespoke/None Standard Work Holding Solutions***

In addition to the standard modular work holding system, we also manufacture bespoke attachments for holding circular/round components allowing the holding of single or multiple components, all of which are fully compatible with the modular rail system supplied as standard.

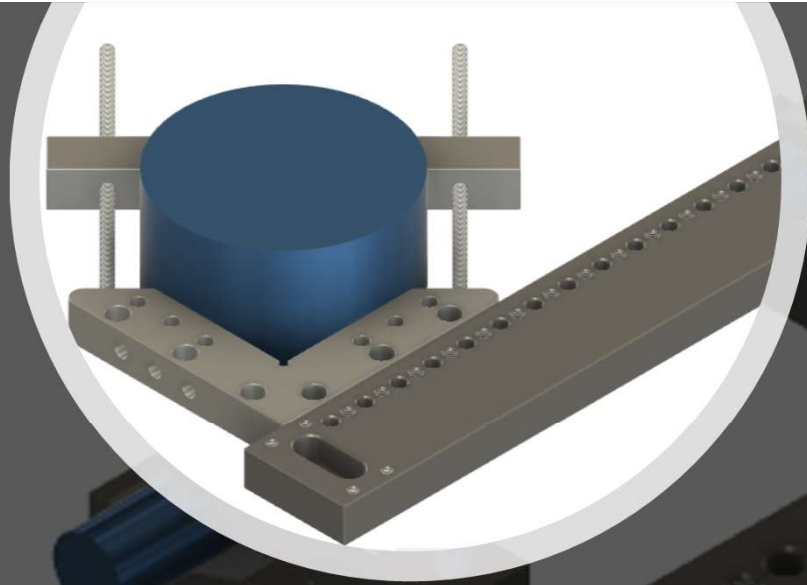
Price and lead time on application.



*Multi Work Holding*



*Circular/Round Work  
Holding Solutions.*





## ***Contact Details***

For More Information On Our  
Modular Work Holding System,  
Please Contact:

**Lee Marvin** – Tooling Solution  
General Manager

T: +44 (0)121 472 6241

E: [lee.marvin@excel-precision.co.uk](mailto:lee.marvin@excel-precision.co.uk)