

Control Pads

A 90.000°

A 135.541°

A 45.000°

L 0.547

A 45.541°

A -88.898°

L 3.393

A 90.000°



Bridge



DimensionTwo
Annotation and precision
measurement software

DESIGNED FOR OPTIMUM PERFORMANCE

DimensionTwo is a versatile inspection and measurement software for users who want to minimise unnecessary errors of measurement but do not need the full certified accuracy of a metrology system. It is ideal for those who need to capture, annotate and share their findings with colleagues, suppliers and customers.

Accurate edge detection

DimensionTwo's video edge detection feature makes it easy to select the optimal point on an edge for measurement. This is far more accurate than is possible by hand alone. As well as measuring between different points, you can save and share images with these details clearly labelled.

Impressive ease of use

A simple and intuitive user interface provides full control of EVO Cam II and allows you to perform image capture, measurement and annotation tasks with ease.

Save time and effort

Save your camera and illumination settings for instant recall. Paired with EVO Cam II you can perform low and high magnification measurements at the touch of a button using either the pre-installed settings or your customised settings.

Dimensioning and measurement

On-screen dimensioning is used on captured images for measuring circles, lines, points, angles and distances. Additionally, there is a range of powerful dimensioning tools available, including creating intersection of lines, pitch circle diameters and more.

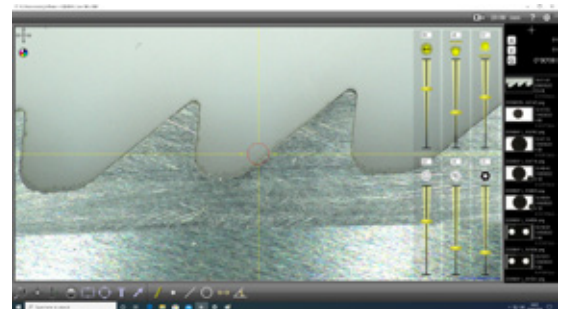
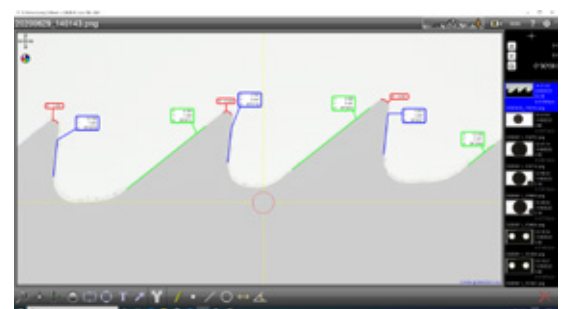
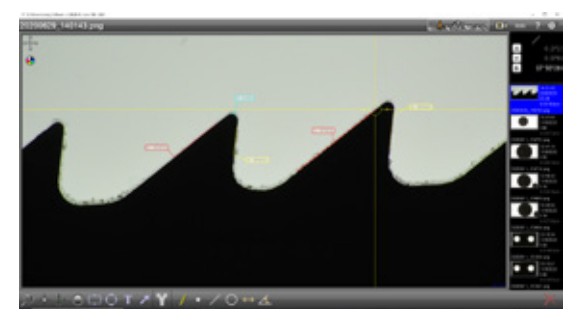


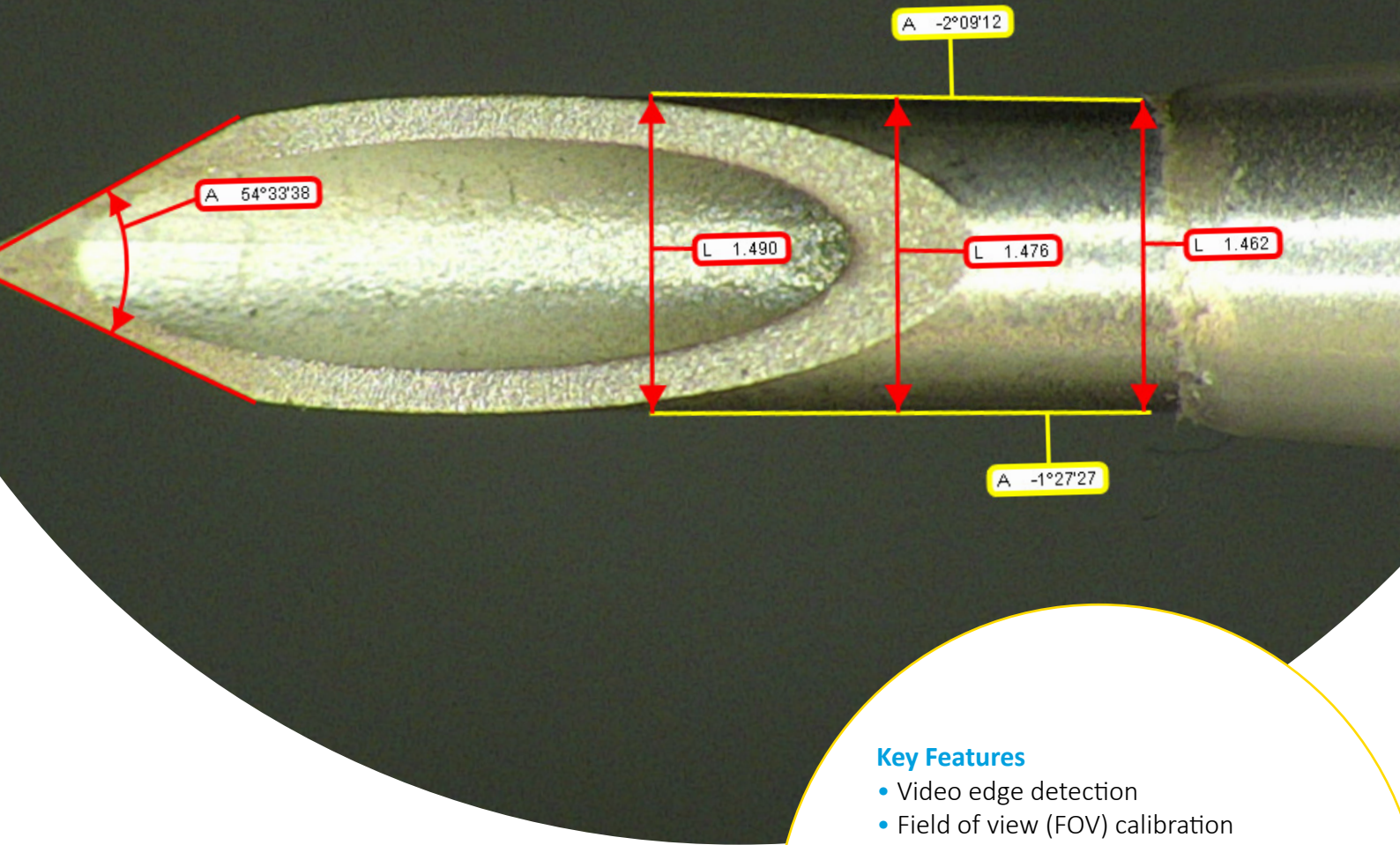
Image capture with camera controls



Contrast control highlighting annotations



Contrast control emphasising image contrast



Key Features

- Video edge detection
- Field of view (FOV) calibration
- Edge bias correction
- Parcentricity correction: linking of positions at different zooms
- Definition and measurement of features
- Easy, fast annotation for reporting
- Control of EVO Cam II
- Pre-set magnification settings with factory set pixel and FOV calibration



Ideal for EVO Cam II

DimensionTwo unlocks the full feature set of EVO Cam II. With the software, you have full control of the camera with save and recall of settings functions, a very wide field of view measurement, and linking of positions at different zoom levels.

DimensionTwo is also compatible with Mantis Elite-Cam HD, Lynx EVO with SmartCAM, Lynx EVO with SmartCAM5, SX Cam and DRV-Z1 (requires adaptor).

VISION ENGINEERING + OUR DIFFERENCE

Vision Engineering Ltd. has been designing and manufacturing high quality ergonomic microscopes, digital instruments, inspection and non-contact measuring systems for over 60 years.

Innovation

With a philosophy of design innovation, Vision Engineering holds world patents for a number of optical / digital techniques, significantly improving viewing ergonomics and enabling customer quality and productivity improvements.

To see our focused quality, please contact your Vision Engineering branch, local authorised distributor, or visit our website: visioneng.com

Quality

Vision Engineering prides itself on quality products, electronics, mechanics and optics and is certified for the quality management system ISO 9001:2015. Quality is as important to us as it is to our customers. Our systems have proved themselves many times over and are chosen by the world's leading companies.

Global

Vision Engineering has manufacturing and design facilities in the UK and USA, plus sales and support offices throughout Europe, the Americas, the Far East, and Asia. We support our customers with close technical and service support anywhere in the world.

Vision Engineering Ltd.
(UK Manufacturing & Commercial)
The Freeman Building, Galileo Drive, Send, Surrey, GU23 7ER, UK
T +44 (0) 1483 248300
E generalinfo@visioneng.co.uk

Vision Engineering Ltd. (Italia)
Via G. Paisiello 106
20092 Cinisello Balsamo MI, Italia
T +39 02 6129 3518
E info@visioneng.it

Vision Engineering (South East Asia)
P-03A-20, Impian Meridian, Jalan Subang 1, USJ 1, 47600 Subang Jaya, Selangor Darul Ehsan, Malaysia
T +604-619 2622
E info@visioneng.asia

Vision Engineering (Mexico)
T +01 800 099 5325
E info@visioneng.com

Vision Engineering Inc.
(NA Manufacturing & Commercial)
570 Danbury Road, New Milford, CT 06776, USA
T +1 (860) 355 3776
E info@visioneng.com

Vision Engineering Ltd. (France)
ZAC de la Tremblaie, Av. de la Tremblaie 91220 Le Plessis Paté, France
T +33 (0) 160 76 60 00
E info@visioneng.fr

Vision Engineering (China)
Room 904B, Building B, No.970, Nanning Road, Xuhui Vanke Center Shanghai, 200235, P.R. China
T +86 (0) 21 5036 7556
E info@visioneng.com.cn

Vision Engineering (Brazil)
E info@visioneng.com.br

Vision Engineering (Latin America)
E info@visioneng.com

Vision Engineering Ltd.
(Central Europe)
Anton-Pendele-Str. 3, 82275 Emmering, Deutschland
T +49 (0) 8141 40167-0
E info@visioneng.de

Nippon Vision Engineering (Japan)
272-2 Saedo-cho, Tsuduki-ku, Yokohama-shi, Kanagawa 224-0054, Japan
T +81 (45) 935 1117
E info@visioneng.jp

Vision Engineering (India)
T + 91 (0) 80-5555-33-60
E info@visioneng.co.in



FM 557119
Vision Engineering Ltd. has been certified for the quality management system ISO 9001:2015.

Sales Partner



Disclaimer - Vision Engineering Ltd. has a policy of continuous development and reserves the right to change or update, without notice, the design, materials or specification of any products, the information contained within this brochure/datasheet and to discontinue production or distribution of any of the products described.
EO&E: Errors and omissions accepted.