



MACHINED PARTS



AMPCO METAL EXCELLENCE IN ENGINEERED ALLOYS



NORTH AMERICA

AMPCO METAL was founded in the U.S.A. in 1914. The AMPCO® line of engineered copper based alloys is world renowned for quality and innovation. Our worldwide distribution network enables us to fulfill machined part requirements in a customer focused manner for a variety of applications in the United States, Europe Asia and India. The intricate machined parts processed in Chicago, U.S.A. are used today in the aerospace, oil & gas, agriculture and of variety of other industrial markets. Our internal focus is to provide value added processing at a competitive price and to meet the time sensitive demands of our diverse customer base.





EUROPE

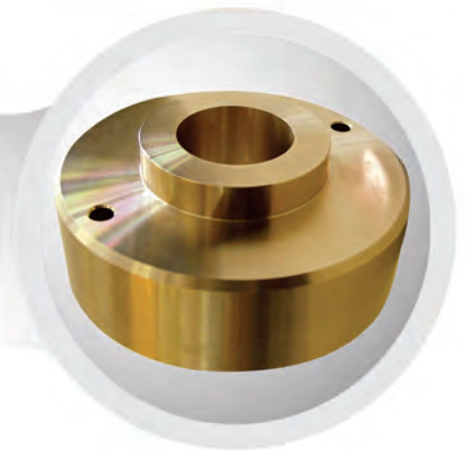
Our plant near Munich, Germany has been supplying the European market with AMPCO® alloy machined parts since the 1960's. Our customers in the tool & die and the automotive industry have come to rely on our superior quality and focused customer service. The 5-axis milling centers and the 3-axis turning centers gives us the capability to process a wide range of machined parts.





The common element for our machining shops in Chicago and Munich is the focus on providing value added machining capabilities from our diverse inventory of copper based bronze alloys. Each location optimizes their internal equipment and processing capabilities to supply their customer base with a variety of unique parts ranging from parts that require adherence to tight tolerances, to parts that are unique in length and/or weight.

Please contact our local AMPCO METAL Sales representative today!

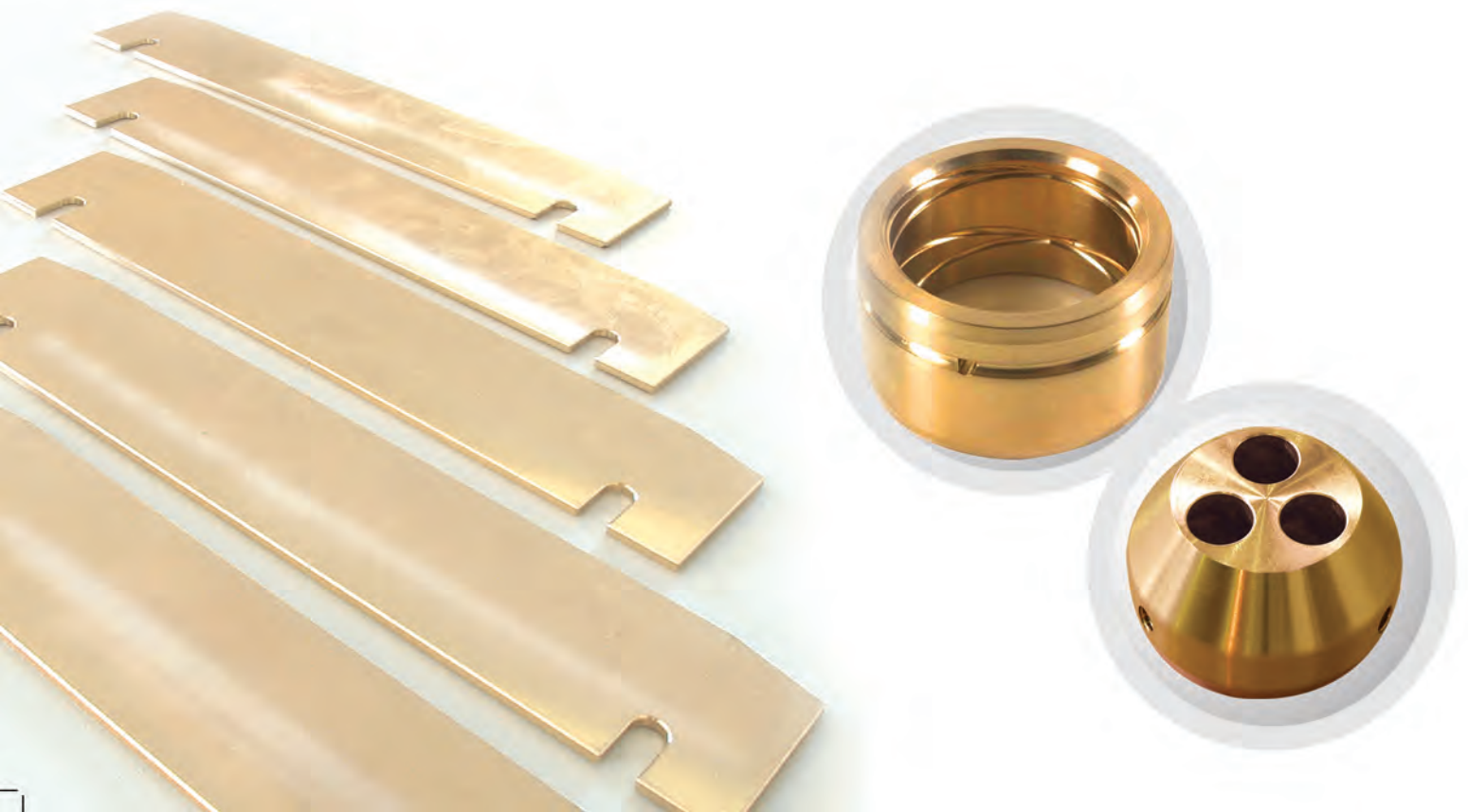


MACHINING CAPABILITIES

USA & EUROPE

		Metric [mm]	Imperial [inch]
Sawing	Max. Cutting Range	520 x 380 x 2500	20 x 15 x 100
Turning	Max. Dimensions	Ø 700 x 3000	Ø 27,5 x 120
		Ø 1000 x 200	Ø 40 x 8
Milling	Max. X, Y, Z travel	3000 x 800 x 720	120 x 32 x 28
3-D Milling (5-axis milling)	Max. Dimensions	730 x 850 x 560	28 x 33 x 22
Surface Grinding	Max. Dimensions	1000 x 450 x 400	40 x 18 x 16
Outside Diameter Grinding	Max. Dimensions	Ø 350 x 1000	Ø 14 x 40
Inside Diameter Grinding	Max. Dimensions	Ø 2 - 170, up to length 500	Ø 0,08 - 7, up to length 20
Deep Hole Drilling	Max. Dimensions	Ø 2,5 - 350, up to length 3800	Ø 0,1 - 14, up to length 150
Wire-cut EDM-ing	Max. X, Y, Z travel	750 x 500 x 400	30 x 20 x 16
Sinker EDM-ing	Max. X, Y, Z travel	350 x 250 x 270	14 x 10 x 11
Welding	MIG / MAG / WIG, DC & AC Current		
Heat Treatment	Max. Dimensions*	1000 x 750 x 400	40 x 30 x 16

* Thickness restrictions might be possible





EUROPE (Headquarters)

AMPCO METAL S.A.

Route de Chésalles 48
 P.O. Box 45, 1723 Marly
 SWITZERLAND
 TOLL FREE PHONE: 800 8080 5050
 Tel.: + 41 26 439 93 00
 Fax: + 41 26 439 93 01
 info@ampcometal.com

CHINA

AMPCO METAL (Foshan) Co.Ltd.

Warehouse 3-A, No 9 Xinyue Road
 Jinqiao Industrial city, Wusha
 Daliang Town, Shunde, Foshan
 Guangdong Province, P.R. China
 P.C. 528333
 TOLL FREE PHONE: 4008 899 028
 Tel.: + 86 (0) 757 2232 6571
 Fax: + 86 (0) 757 2232 6570
 infochina@ampcometal.com

INDIA

AMPCO METAL INDIA PVT LTD

Gat no.357/73,Plot no.12&13,
 Waghjainagar road,
 Kharabwadi Chakan,
 Pune 410501,
 MAHARASHTRA INDIA
 Tel.: + 91 2135 610810
 Fax: + 91 2135 610811
 infoindia@ampcometal.com

USA

AMPCO METAL Inc.

1117 East Algonquin Road
 Arlington Heights 60005, Illinois
 USA
 TOLL FREE PHONE: 800 844 6008
 Tel.: + 1 847 437 6000
 Fax: + 1 847 437 6008
 infousa@ampcometal.com