

AMPCO® Aluminium Bronze

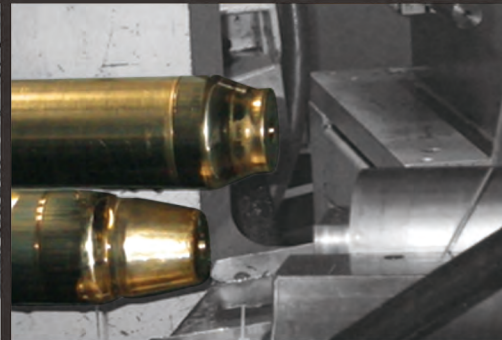
These superior alloys are used for tube bending and profiles in Stainless Steel, Titanium, Low carbon steel or Aluminium.



Three ball mandrel in AMPCO® 21



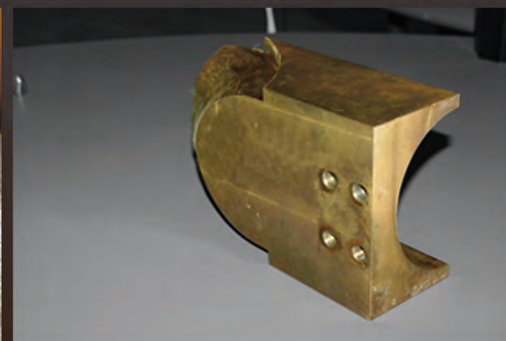
End forming on stainless steel tube with AMPCO® 25 mandrel.



Expansion of tube in 2 steps, with mandrel in AMPCO® 25.



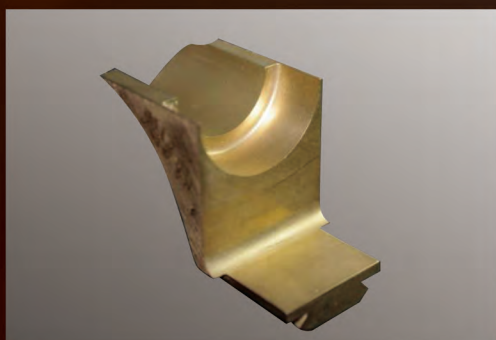
Insert wiper dies in AMPCO® 18.



Wiper dies block in AMPCO® M4, for tubes Ø142 mm.



A three balls mandrel in AMPCO® 18.23.



AMPCO® M4 wiper dies with a small dovetail.



Multi stack dies in AMPCO® 18.23 like mandrel.



Box mandrel in AMPCO® 18.



EUROPE(Headquarters)
AMPCO METAL S.A.
 Route de Chésalles 48
 P.O.Box 45,1723 Marly
 SWITZERLAND
 TOLL FREE PHONE: 800 8080 5050
 Tel.: + 41 26 439 93 00
 Fax.: + 41 26 439 93 01
 info@ampcometal.com

BRASIL
AMPCO METAL Brasil Ltda.
 Rua Dona Francisca 8400 - galpão 2
 Zona Industrial Norte
 Joinville, SC - 89219 - 600
 Tel.: + 55 47 3305 0020
 Fax: + 55 47 3305 0021
 info@ampcometal.com

CHINA
AMPCO METAL (Foshan) Co.,Ltd.
 Warehouse 3-A No 9 Xinyue road
 Jinqiao Industrial city, Wusha
 Daliang town, Shunde, Foshan
 Guangdong Province, P.R.China.
 P.C.528333
 TOLL FREE PHONE: 4008 899 028
 Tel.: + 86 (0) 757 2232 6571
 Fax: + 86 (0) 757 2232 6570
 infochina@ampcometal.com

INDIA
AMPCO METAL INDIA PVT LTD
 Gat no.357/73, Plot no.12&13,
 Waghjainagar road,
 Kharabwadi Chakan,
 Pune 410501,
 MAHARASHTRA INDIA
 Tel: + 91 2135 610810
 Fax: + 91 2135 610811
 infoindia@ampcometal.com

KOREA
AMPCO METAL KOREA CO.,LTD
 Yucheon Factopia 313
 196 Anyang-dong, Manan-ku
 Anyang-shi, Kyungki-do, 430-727,
 REPUBLIC OF KOREA
 Tel: + 82 (0) 31 467 2500
 Fax: + 82 (0) 31 467 2511
 infokorea@ampcometal.com

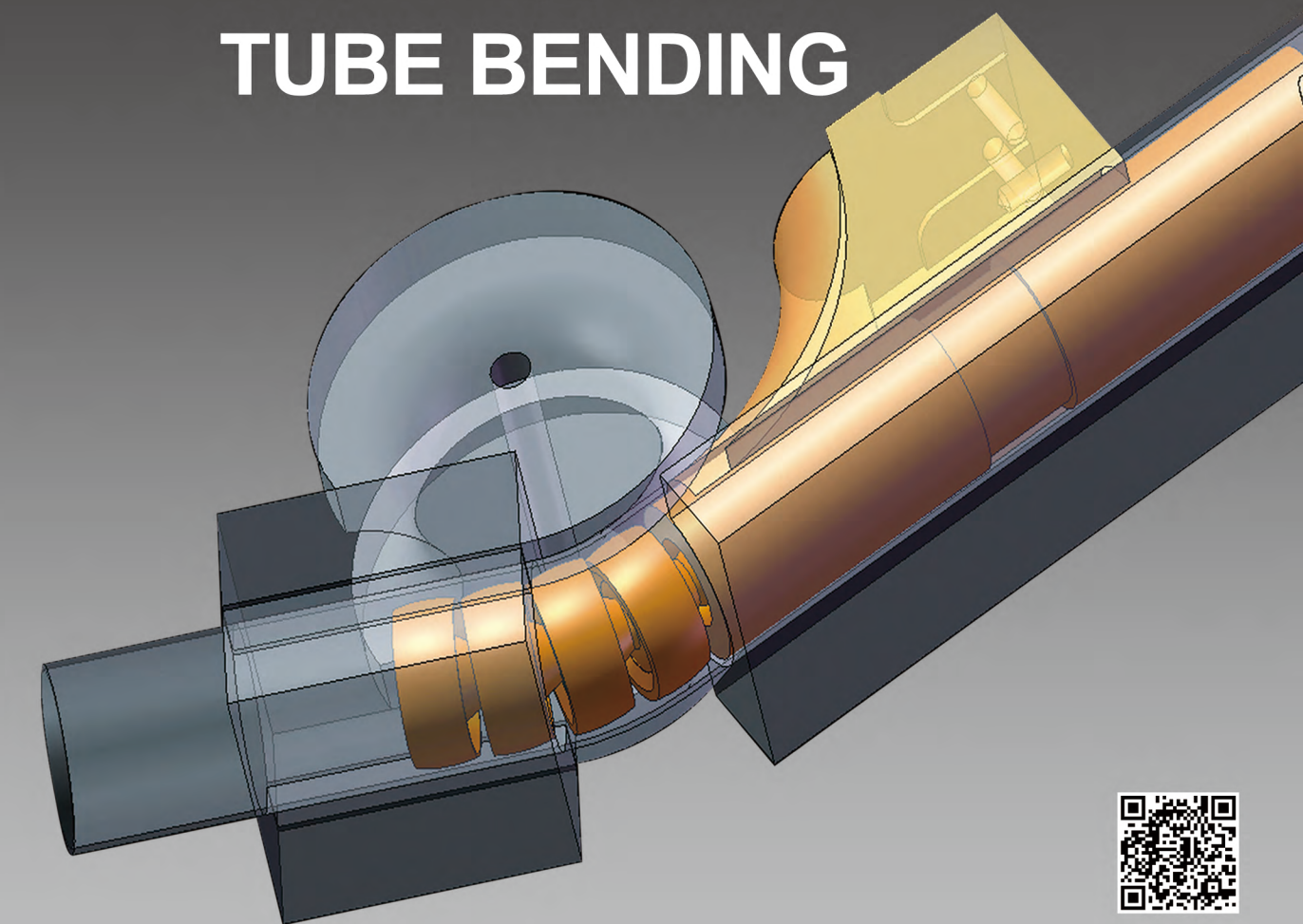
U.S.A
AMPCO METAL Inc.
 1117 East Algonquin Road
 Arlington Heights, 60005, Illinois
 USA
 TOLL FREE PHONE : + 1 800 844 6008
 Tel: + 1 800 844 6008
 Fax: + 1 847 437 6008
 infousa@ampcometal.com

www.ampcometal.com



A Second Century of Innovation

TUBE BENDING



AMPCO METAL EXCELLENCE IN ENGINEERED ALLOYS

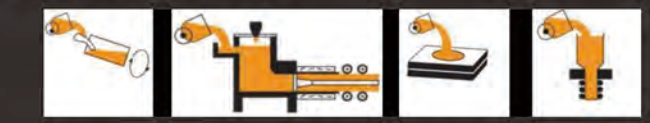


ALUMINIUM BRONZES

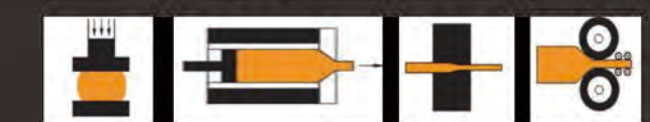
AMPCO® Aluminium Bronze Production Process

AMPCO Reference	ASTM	Nominal Chemical Composition (Remainder Cu)							Mechanical & Physical Properties							Usage Guideline			Recommended applications	
		Sn	Zn	Pb	Al	Fe	Ni	Mn	D Kg/dm³	Rm MPa	Rp 0.2 MPa	As %	HBW 10/3000	Therm. conductivity W/m·K	Linear expansion Coefficient °C	Coefficient Friction Unlubricated	Need for Lubrication	Average speed m/s		Average load Mpa
									lbs/in3	Ksi	Ksi	%	10/3000	Btu/ft-hr. °K	°F			feet/s		Ksi
AMPCO® 8		0.25			6.5	2.5		7.95	552	283	40	153	54	16	0.17	Moderate	1.5	85	Used whenever good resistance to corrosion, abrasion and cavitation pitting is essential. Ideally suited in chemical and marine industries, in bolting material. It is used also for bushings, bearings and wear strips.	
								0.287	80	41			31	8.89			4.9	12.3		
AMPCO® 18				10.5	3.5			7.45	724	365	14	192	63	16	0.18	Moderate	1.5	100	Food approval material. Alloy well suited for use as gears, worm wheels, bushings and bearings. Standard for all applications requiring sliding wear and fatigue resistance. Used in the steel industry as screw down nuts, slippers, breaker blocks.	
								0.269	105	53			36.2	8.89			4.9	14.5		
AMPCO® 18.23				10.5	3.5			7.45	758	386	16	207	59	16	0.18	Moderate	1.5	100	This heat treated alloy gives a maximum resistance to distortion. It gives successful performance under heavy load and impact conditions.	
								0.269	110	56			33.9	8.89			4.9	14.5		
AMPCO® 21				13.1	4.4		2	7.21	758	420	1	286	46	16	0.21	Moderate	0.7	115	Used for wear strips replacing hardened steel, and for some cams when no impact is involved. The largest use is as die rings inserts, forming rolls in bending, forming and drawing operation. Widely used as support blades for centerless grinding.	
								0.261	110	61			26.4	8.89			2.3	16.7		
AMPCO® 22				14.1	4.7		2	7.06	724	427	0.5	332	42	16	0.25	Moderate	0.6	120	Duplex structure with approximately 50% of phase gamma 2 and 50% of phase beta. Excellent compression and wear resistance. Used in forming and drawing where it's essential that tolerance be maintained.	
								0.255	105	62			24.1	8.89			2	17.4		
AMPCO® 25							Proprietary material	6.93	Rmc 1580	Rpc 0.1 710	0.2	364	33	16	0.30	Moderate	0.5	125	This is a patented alloy. The extreme hardness, compressive strength and good friction properties makes it ideal for forming material, especially when stainless steel or titanium is the material been processed. Used as forming rolls bending and wiper dies. Essential in the deep drawing process.	
								0.250	229	103			19	8.89			1.6	18.1		
AMPCO® 26							Proprietary material	6.93	Rmc 1601	Rpc 0.1 720	0	420	33	16	0.32	Moderate	0.4	130	This patented alloy shows an extreme hardness which gives exceptional results. Due to this extreme hardness this material needs special attention in handling and machining. Use for stainless steel drawing dies, forming rolls under great stress and extreme pressures.	
								0.250	232	104			19	8.89			1.3	18.9		
AMPCO® 45	AMS 4640 AMS 4880			10	2.5	5	1.5	7.53	814	517	15	228	46	16.2	0.23	High	1.5	90	High strength alloy with applications involving abrasive wear, friction, deformation and chemical erosion, aircraft bushings, pump and marine shafts and wear rings, valve spindles and seats, machine tools parts. Spark resistance properties make it suitable for safety tools in explosive environments.	
								0.272	118	75			26.4	9.00			4.9	13.1		
AMPCO® M4	AMS 4590 AMS 4881			10.5	4.8	5	1.5	7.45	1000	793	8	260/300	42	16	0.23	High	1.0	330	Food approval material. Developed for aircraft specifications. Alloy for gear and retractable landing assemblies, engine spacer bearings. It is growing in use where higher mechanical properties at elevated temperatures together with corrosion resistance properties are required. Typical applications in tube bending process. (Mandrels, wiper dies).	
								0.269	145	115			24.1	8.89			3.3	47.9		

Casting :



Transformation :



AMPCO® 18 bars for mandrels and balls.



AMPCO® 18 rectangles for wiper dies blocks.

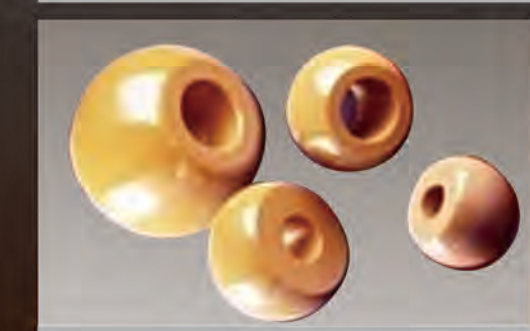


AMPCO® 18 tube for insert wiper dies.

In addition to offering our alloys, AMPCO can assist you providing finished parts, according to your specifications and drawings.



AMPCO® material is useful from simple plug to multiple balls mandrels.



Ceramic balls



One ball mandrel with ball in AMPCO® 25



Center links in steel