

# FLEXIBLE EQUIPMENT HIRE AND LEASING SERVICE

All our equipment is available with or without the following software installed: PolyWorks, Aberlink and CAM2



## PORTABLE CMMs

Redefining precision measurement, Portable CMMs offer unparalleled flexibility and accuracy. Utilising handheld probes or scanning tools, these compact devices enable swift inspection, transcending traditional limitations and optimising quality control protocols.

### Selection of equipment available:

- PMT
- Faro
- Romer

### Size range:

- 1.2 metres to 4.5 metres

## LASER SCANNERS

Distinguished by their swift and precise measurements, laser scanners are indispensable in various industries. Their compact design and versatile functionality simplify quality management processes, guaranteeing impeccable standards across the board.

### Selection of equipment available:

- Peel 3
- Handyscan
- AS1 Laser Scanner
- Rev 6 HD LLP



## LARGE SCALE SCANNING

Large scale scanning sets new benchmarks in precision and efficiency, ensuring unparalleled accuracy and reliability. This innovative approach caters to projects of any size within architecture, engineering and manufacturing, consistently delivering precise results.

### Selection of equipment available:

- Faro Focus Scanners
- Leica BLK360

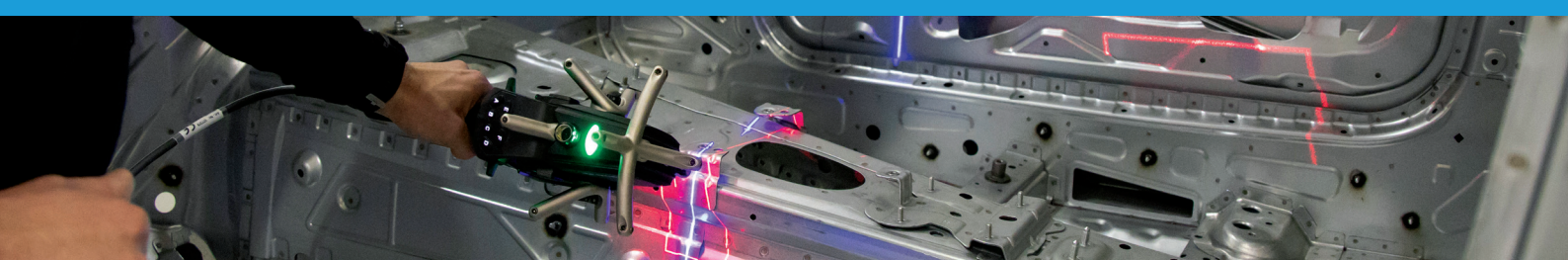
## LASER TRACKERS

Renowned for precision and versatility, laser trackers provide highly accurate measurements for diverse industrial applications. Their portable design and advanced technology enhance quality assessment, boosting productivity and maintaining manufacturing standards.

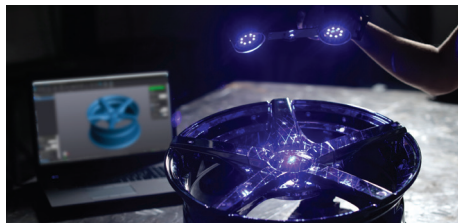
### Selection of equipment available:

- Leica Absolute Tracker AT960
- Leica Absolute Tracker ATS600
- Leica Absolute Tracker AT500
- Leica Absolute Tracker AT400 Series
- Faro Vantage





## OUR COMPLETE RANGE OF SERVICES

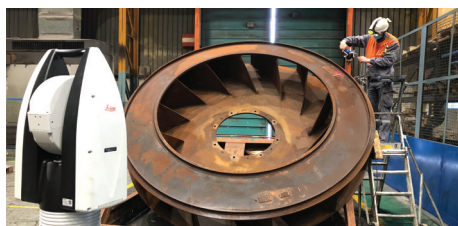


### LASER SCANNING AND REVERSE ENGINEERING

We specialise in bespoke solutions for a range of industries, using advanced non-contact HD laser scanners to deliver precise CAD comparison services with custom reports. Our reverse engineering expertise provides accurate 3D data and comprehensive parametric CAD models, enabling cost-effective part replacement by extracting crucial design information.

### SUBCONTRACT INSPECTION

Our subcontract inspection services optimise workflow productivity with precision measurements of large-scale objects like jigs, fixtures, machined components and more. Our recent investment in advanced technology enhances accuracy, making it ideal for aerospace, automotive and construction applications. With skilled engineers and state-of-the-art equipment, we ensure meticulous results.



### ALIGNMENT AND INSPECTION

Accurate 3D measurements are essential for thorough inspection. Utilising laser trackers ensures efficiency. We provide professional and precise alignments of shafts, bearings, machine centres, motors and gears, covering distances of up to 320 metres without the need for CAD or drawings. Our range of laser trackers is entirely portable and employs advanced technology to ensure precise measurements.

### ROBOT CALIBRATION AND FLOOR MARKING

We use the latest technology for robot calibration and floor marking. With a laser tracker and our custom-designed floor marking unit, we input X, Y, Z coordinates of floor plate edges or holes into the software, automatically positioning them in a user-predefined sequence. Primarily catering to the automotive industry, we calibrate robots with our laser trackers to meet the required accuracies specified by our customers.

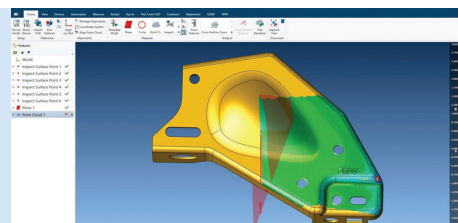


### 3D PRINTING

Our 3D printing service is well-suited for engineering and manufacturing needs. Our printers handle a wide range of materials, including composite materials with a heat deflection temperature of 140°C. They reinforce nylon parts with continuous strands of carbon fibre, Kevlar and fibreglass, as well as high-temperature materials like polycarbonate, ensuring versatility and reliability.

### COMPREHENSIVE TRAINING

Enhance operational proficiency with our customised comprehensive training services, also available on-site. Whether refreshing existing knowledge or mastering new systems and products, training is provided across various software applications, including Aberlink, CAM2 and Autodesk. This ensures that all team members are equipped with the necessary skills for optimal performance.



## Manchester Metrology Ltd

Unit 3, The Wellington Centre, Whitelands Road, Ashton-under-Lyne OL6 6UY  
0161 637 8744 | [manchester-metrology.co.uk](http://manchester-metrology.co.uk)

