



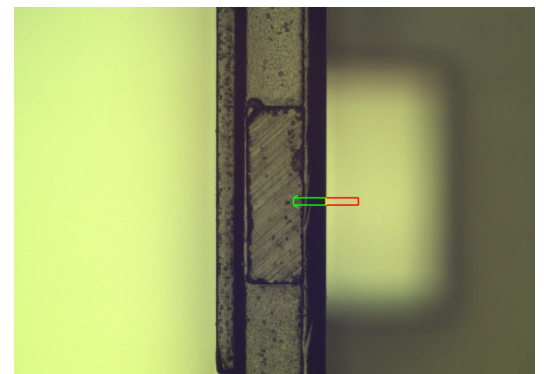
Video measuring software gains automated edge setting function



For more than 30 years, manufacturers using Nikon's NEXIV series of video measuring machines have harnessed the power of AutoMeasure software, a highly effective platform with which it is easy to create programs for performing precise dimensional measurements. Now the Industrial Metrology Business Unit of Nikon Corporation (<https://industry.nikon.com>) has announced that the software's operability has been improved further by the addition of automated edge finding.

Simply by enabling the automated edge setting function in the latest release, AutoMeasure version 13.2, it is possible to program a measuring routine more quickly prior to inspection. The process allows the operator to specify approximately and therefore quickly the edges to be measured on the image of the component. The software then automatically locates the precise position of features in that region to allow the correct edge to be chosen manually from the suggested options.

Accurate measurements with little variation are obtained, without having to depend on the operator's proficiency. It ensures repeatability of results, even when different personnel are using the metrology system. Moreover, as the procedure to create programs has been simplified, the time required to set up an inspection task has been reduced, raising the overall efficiency of NEXIV video measuring systems.



Edge detection

PRESS RELEASE

Video measuring
software gains
automated edge
setting function

About Nikon Metrology

Nikon provides a variety of products, services, and solutions worldwide, based on advanced opto-electronics and precision technologies cultivated during the company's more than 100 years of history. The group continues to create new values that contribute to improvement of quality of life and manufacturing in a wide variety of forms. Nikon's Industrial Metrology Business Unit (IMBU) delivers integrated, optimised, ultra-high precision solutions that are not only customised and cost-effective but also work extremely well as soon as they are implemented. A recent development under Nikon's Digital Manufacturing banner is closer cooperation between IMBU and the corporation's Digital Solutions Business Unit (DSBU), which has launched a series of optical additive and subtractive manufacturing solutions for processing a wide variety of materials to sub-micron surface finish. www.industry.nikon.com