



REM Systems Ltd  
Unit D3  
Churcham Business Park  
Churcham  
Gloucestershire  
GL2 8AX

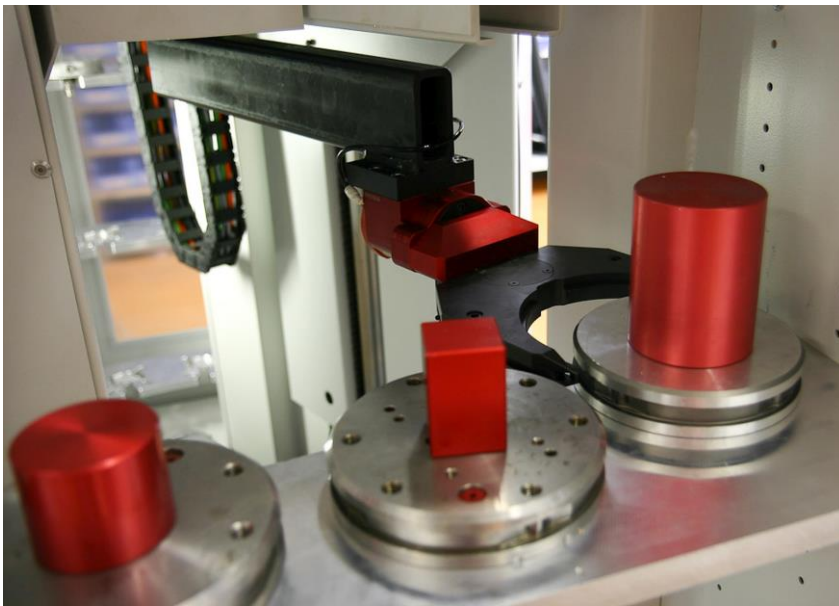
Tel: 01452 750581  
Fax: 01452 750945  
[www.remsystems.co.uk](http://www.remsystems.co.uk)

Ref - Automation

January 2016

## **Machine tool automation... is it right for your business?**

A number of key objections can be put forward against the automating of a manufacturing process. Some of the most common of these are cost; available space, and the lack of flexibility of the automation system. There is no denying it will require capital investment, will occupy some floorspace and may not be as flexible as having an operator stood at the machine all day. However, as REM Systems explains, when applied correctly automation can deliver considerable cost savings and increased manufacturing capacity.



For many, machine tool automation starts and ends with standalone, multi-axis robots, that have been made familiar by scenes of high volume manufacturing plants with sparks flying from spot welders, or robot arms spray painting cars. "Now is the time for smaller businesses to start to think outside the box when it comes to maximising productivity and adopting lean manufacturing practises," states Ian Holbeche, Managing Director of Automation specialist REM Systems. "Our typical automation customer manufactures high value components on 5-axis machines. Their production is predominantly complex components in high variety, low volume with 50-off being considered a large batch. This is so far away from what is perceived as typical automation territory, without a 'typical' robot in sight."

With a standalone industrial robot space is a major issue as the arc of movement of the robot arm has to be accommodated and, if multiple machines are to be supported by a single robot they have to be positioned radially around the robot potentially wasting valuable floorspace.

A linear system, with the robot moving along a line of machine tools is much more space efficient. So, once the myth that robots only come in one shape is dispelled the next obstacle to overcome is the fear of many small- to medium-sized manufacturing companies that automation is expensive and cumbersome. Modern systems can be tailored to suit particular requirements and they have the flexibility to adapt when manufacturing demand changes.

"Some machine suppliers do offer automation solutions, but they are often restricted to a limited range of automation that can be both expensive and inflexible, and are not tailored to the customers' specific needs," Ian Holbeche points out.

For example, many OEM supplied automation systems will feature fixed sized pallets that match the size of the machine table. This is fine if you are constantly machining larger components or can fixture multiple smaller parts for machining. If you are machining a variety of components of differing sizes then a fixed sized pallet is not the most cost-effective route to take.

Having pallets that match the size of the workpiece has several advantages, including better access for cutting tools, and a lower investment cost. Of course, REM Systems customers have a high mix of components that means small pallets are not always the answer. This is why the ability to mix and match pallet sizes within an automation system is essential for efficient operation.

Being able to mix and match pallet sizes and adapt the automation system to the changing production needs is a major benefit of the Erowa systems provided by REM Systems. The ability

for a system to support more than one machine tool from a single load station, with only one robot involved is also a major factor in reducing the cost of automation.

A customer in the world of high performance automotive parts is Tamworth-based Alcon Components, which is renowned for the manufacture and supply of high-specification brakes and clutches for motorsport and high performance vehicles. A key driver for automation here was the ability to achieve a fast response to its customers' demands.

Manufacturing processes must be able to adapt quickly to customer demands and investment in the latest machine tool technology is one way to ensure these demands can be met. So, Alcon's flexible production cell includes a Hermle C20U 5-axis machining centre and an Erowa Robot Easy automatic pallet loading system.

The cell was configured to handle 12 pallets, based on the Erowa Production Chuck 210. Each pallet can be loaded with raw material or workpieces up to 260 mm square or 325 mm diameter with a transfer weight of up to 130 kg. This capacity allows Alcon to automatically load large and complex brake calliper housings that can require 2 or 3 hours machining. This means the machine could be left unattended for 24 hours. This allows the highly skilled operators to attend the machine during the day for process proving and the machine then to continue on its own during the night with more established work.

Alcon says: "As well as being able to run unattended, the cell gives a more flexible way of working. One-off jobs are easily accomplished and the repeatability of the pallet base allows us to stop jobs before they are finished and restart them later with no realignment issues. With this flexibility we can change the production plan at any time."

The Robot Easy is part of the overall range of automation systems available through REM Systems. These systems can be as simple, or as complex, as the application demands. For example, the popular Erowa Robot Compact system takes up just 2 m<sup>2</sup> of floorspace with as many as 200 different positions in the storage magazine. For even greater capacity and flexibility the Erowa Robot Dynamic system can store a mixture of up to 1,200 pallets. It can automatically change its gripper to suit different sizes of pallet/component and the robot itself travels along a rail to support up to eight independent machine tools.

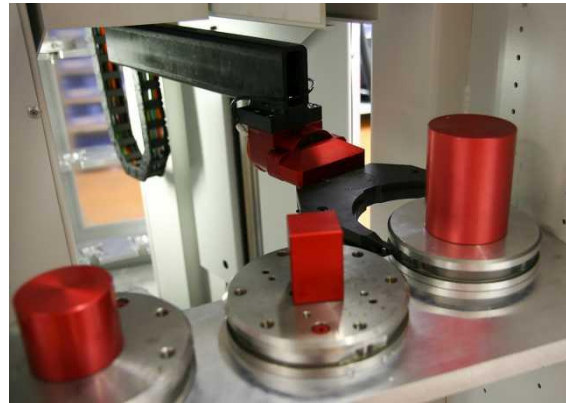
"Being independent of any one machine tool company we feel that we can discuss automation in an open and objective way with our customers and in doing so achieve the optimum solution in terms of productivity, flexibility, and cost. Automation is an investment that offers many positive

benefits to machine tool users, it certainly shouldn't be something that gives you sleepless nights," says Ian Holbeche.

He concludes: "If you are still unsure if automation is for you, REM Systems is happy to provide a free of charge consultation to look at specific requirements and provide an honest assessment of whether automation can benefit your production needs."

End

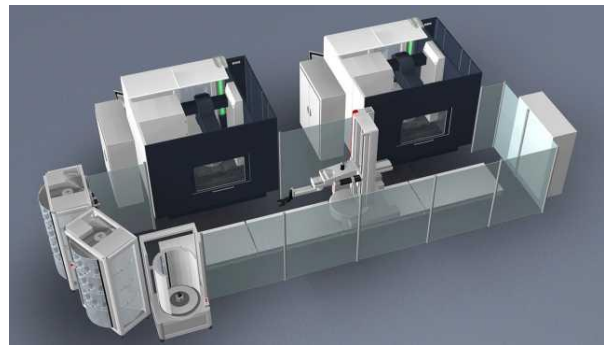
**Images:**



(AM1.jpg) Eropa robot loading a machine tool (AM2.jpg) Pallets of raw material ready for automated loading



(AM3.jpg) Pallet system holding a variety of raw material ready to be automatically loaded and machined



(AM4.jpg and AM5.jpg) Multi-machine tool cell supported by one linear robot

**Note to Editors**

REM Systems was established in the early eighties to service Swiss EDM machines. This activity brought the company into contact with the Swiss tooling and automation company Erowa and it has been its distributor in the UK and Ireland since 1987.

At about the same time, it also became the distributor for another Swiss company, TRIAG that produces multi-vice systems. Recently it became the distributor for a third Swiss company, FTool that manufactures EDM tooling systems. REM Systems association with these companies, coupled with many years' experience of machine tools and production engineering, means it is well placed to help customers in their pursuit of lean manufacturing processes.

***On behalf of:***

REM Systems Ltd  
Unit D3  
Churcham Business Park  
Churcham  
Gloucestershire GL2 8AX  
Tel: 01452 750581  
  
[www.remsystems.co.uk](http://www.remsystems.co.uk)

***Issued by:***

Complete PR Limited  
14 Wickham Close  
Newington  
Sittingbourne  
Kent ME9 7NT  
Tel: 0203 289 7515  
  
[simon@complete-pr.co.uk](mailto:simon@complete-pr.co.uk)

**Contact:**

Ian Holbeche

**Contact:**

Simon Simmons