

NEW!

RUD ID System®

Inspection and documentation made easy!

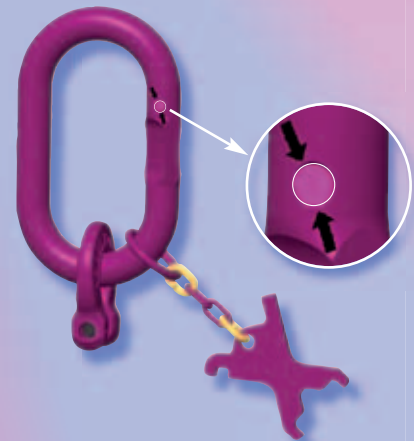


Required, regularly inspections of lifting means are currently still time consuming and often sensible in regard of fault-prone.

But due to the **RFID-technology** (Radio-Frequenz-Identifikation) these time consuming methods and huge amount of paper work become history.

Chain slings/components can now contactless, faultless and fast identified and with the clear Identification number they can be registered and conducted.

The modern and digital times of documentation and administration of work means reaches hereby a new peak point.



RUD ID System®

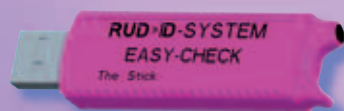
RUD-ID-POINT®

The components can be marked by the **RUD-ID-Point®** (RFID chip) and with the clear identification number distinguished.



RUD-ID-EASY-CHECK®

The robust **RUD-ID-EASY-CHECK®** readers capture the Identification number of the **RUD-ID-Point®** and transfer it to the **RUD-ID-NET®** application (software), resp. optionally to your PC application like WordPad, MS Word, MS Excel, SAP etc.



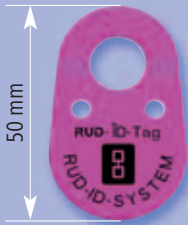
RUD-ID-NET®

The extendable **RUD-ID-NET®** application (software) will support your product administration and documentation.




RUD ID System®
RUD-ID-POINT®


Reference no.: 7998881



Reference no.: 7901288

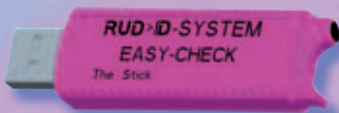
The exclusive and unbeatable **RUD-ID-Point®** persuades at difficult applications and ambient conditions. Applicable between -60°C and +300°C. Extreme high resistance against beats, water and pollution. No impairment of serviceability and capability of components by the embedded RFID-Chip.

RUD-ID-Point® 8 mm (13.86 MHz HF):

Press-fit transponder (in metal). No glue necessary. Size: 8 mm x 3.25 mm
The usage of **RFID-Chips** embedded into a hole of a lifting and conveying safety component is protected by a patent.

RUD-ID-TAG® (13.86 MHz HF):

Metal reinforced tag for chains, connecting links, wire ropes, alternatively also for bolting. Size: 50 mm x 32 mm x 6 mm

RUD-ID-EASY-CHECK®


Reference no.: 7901000



Reference no.: 7901524 (Bluetooth)

The **RUD-ID-EASY-CHECK®** readers are compatible with the **RUD-ID-Points®** as well as with common high frequency transponders/chips (ISO 15693). The transfer of the identification number is carried out either by USB or Bluetooth and can be linked up with the **RUD-ID-NET®** application (software), almost all Office applications (WordPad, MS Word, MS Excel, Open Office) and also with SAP or other programs.

RUD-ID-EASY-CHECK® (13.56 MHz):

USB-reader for reading out of the **RUD-ID-Point®** identification number.

RUD-ID-DISPLAY-CHECK® (13.56 MHz):

Bluetooth reader, reads out the unique **RUD-ID-Point®** identification number and shows it on the integrated LCD display.

RUD-ID-NET®


The **RUD-ID-NET®** application (software) makes many things easier. This application supports you amongst others, like test inspection.

- Uncomplicated digital maintenance, analysis, administration of product datas, test reports, as well as documents (efficient carry out of test, automatic test reminder in addition to the by law required test, automatic test reports)
- Digital connection to current product information and documents (f.e. test reports) with access to the RUD web portal.
- Extendable software for different work equipment which has to be inspected regularly (f.e. work platforms, roller shutter).